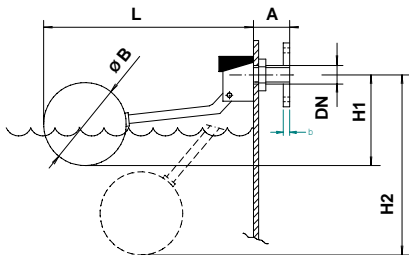


FIG. 100 B

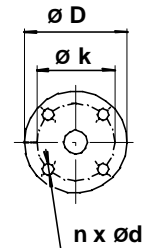
FLOAT VALVE WITH FLANGE

H1 – Corresponds to the closed valve. The real value depends on the pressure when closed and the liquid density used.

H2 – Corresponds to the open valve when the float is in its lowest position.



DN
10 - 32



Size (mm)	DIMENSIONS FIG. 100 B (mm)										MASS WITHOUT BUOY (Kg)	ØB SPHERICAL BUOY
	DN	A	L	H1	H2	D	k	d	n	b		
3/8"	10	35	300 316	70 132	260	90	60	14	4	14	0,720	90
1/2"	15	38	405 422	124 180	370	95	65	14	4	14	0,853	110
3/4"	20	45	485 513	148 207	420	105	75	14	4	16	1,236	160
1"	25	48	562 593	150 220	496	115	85	14	4	16	1,490	160
1-1/4"	32	55	580 611	170 235	496	140	100	18	4	16	2,105	160

Features:

Made from stainless steel 18/8 (AISI – 304/DIN 1.4301) and 18/8/2 (AISI 316/DIN 1.4401),
With a black polythene cover, polythene buoys available in stainless steel AISI – 304/AISI – 316 on demand.

Swing type valve with silicone shutter, available in Viton, EPDM, Buna, PTFE, etc., on demand.
The valve closes progressively.

Valve system patented and guarantees a perfect seal with minimum force from the float.

Connection with Gas thread cylindrical DIN – ISO 228/1985.

Note: For turbulent waters, shaken water deposits found in refrigeration towers, etc. reinforced levers should be used.

Nominal pressure PN – 10, maximum variable pressure 10 bar.

Nom-binding information sheet and may be modified without notice.



Rda. Shimizu nº nave 4
Pol. Ind. Can Torrella
08233 Vacarisses – Barcelona - (España)
Tel. +34 938 280 444 – Fax. +34 938 280 450
E-mail: comercial@valvulasct.com
info@valvulasct.com

www.valvulasct.com



Certificate Number: 342073